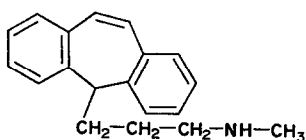


ERRATUM

ROBERT A. LAHTI and ROGER P. MAICKEL: The tricyclic antidepressants—Inhibition of norepinephrine uptake as related to potentiation of norepinephrine and clinical efficacy. *Biochem. Pharmac.* **20**, 482 (1971).

The authors regret that the structure given for Protryptiline is incorrect as shown in Table 1. The structure should be shown below:



In conjunction with this change the second paragraph below Table 2 should read:

In conclusion, it has been shown that incorporation of the terminal amine of a tricyclic antidepressant into a piperazine ring results in